

# STAMPED CONCRETE



STAMPED & DECORATIVE  
CONCRETE SYSTEMS  
FLOORS & WALLS

# LONDON COBBLE

London Cobble stone is a traditional running bond cobblestone pattern that expresses charm and elegance.

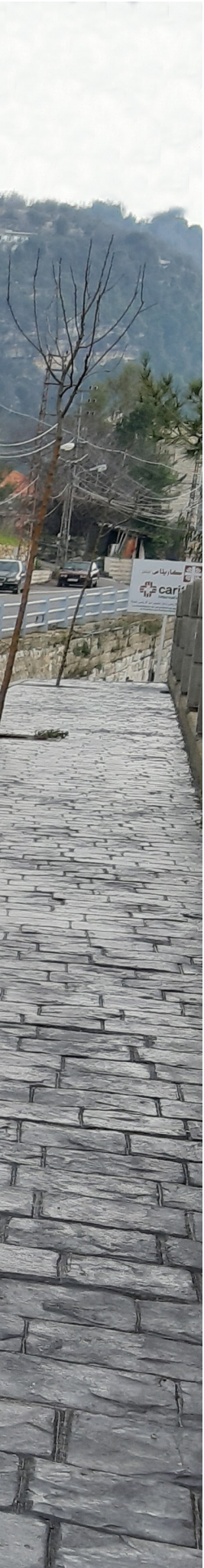




LONDON COBBLE





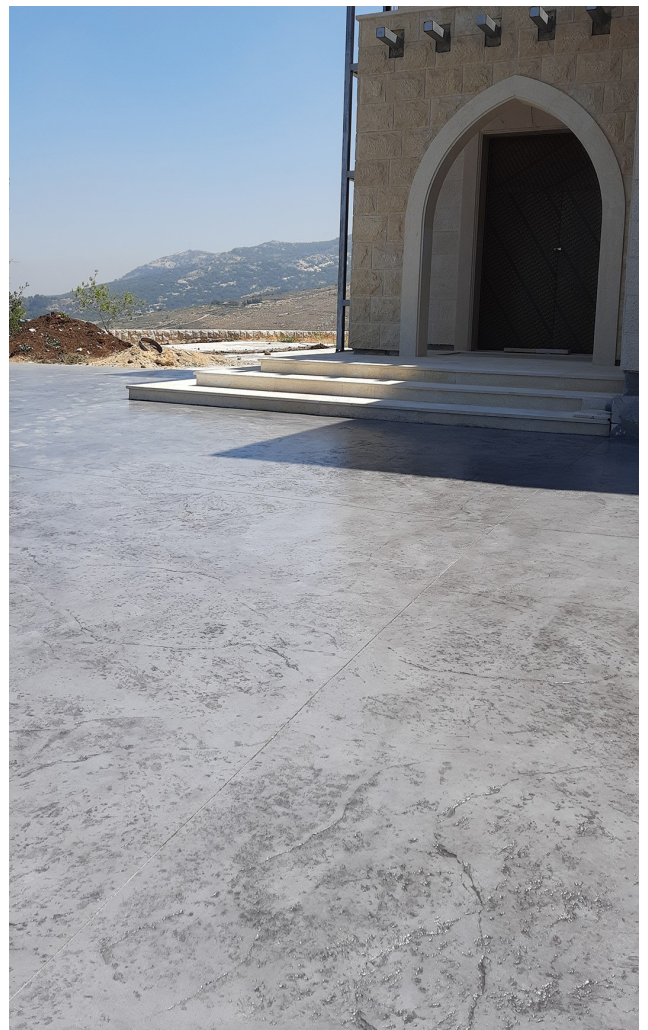


LONDON COBBLE

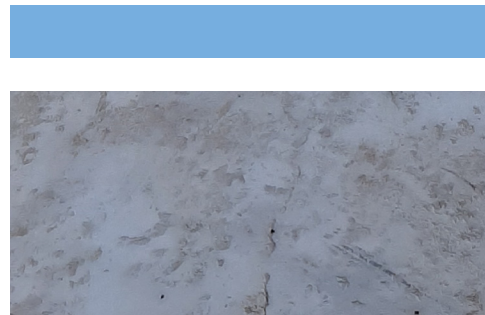


# SKIN

Texture with pronounced veining and provide an old world appearance.











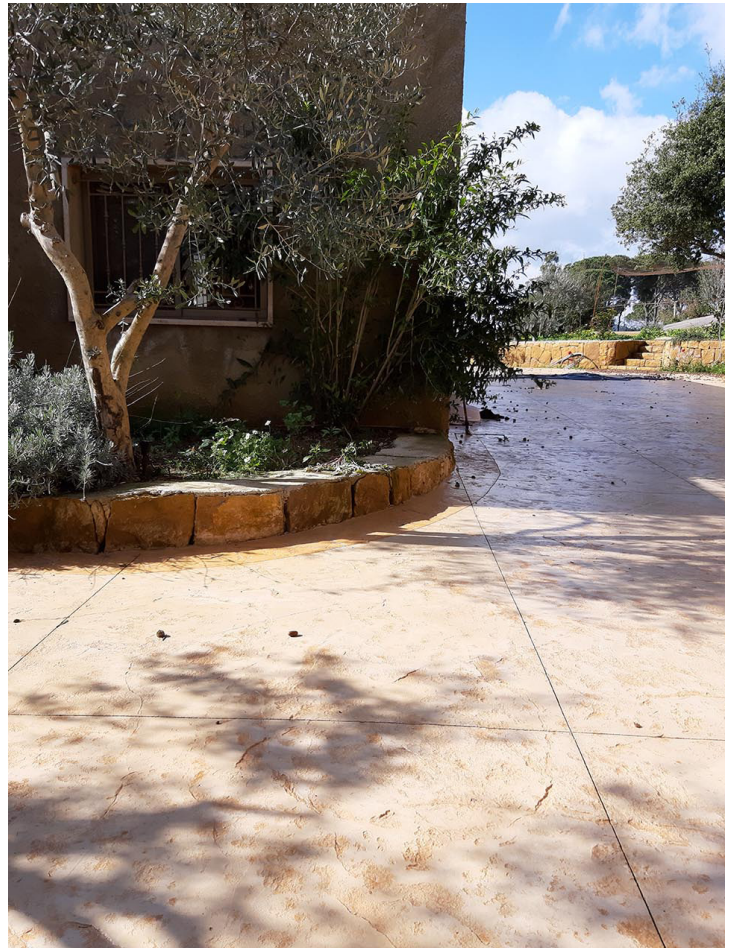
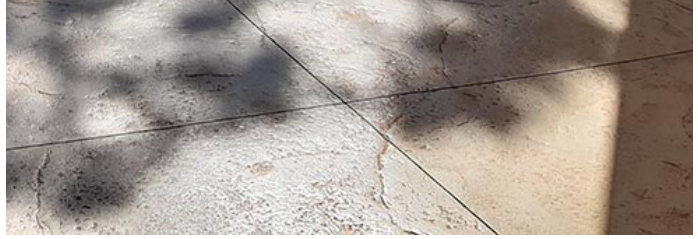




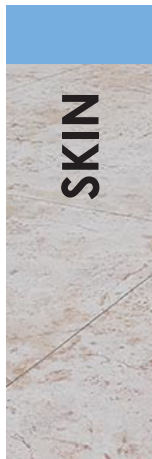




SKIN







SKIN

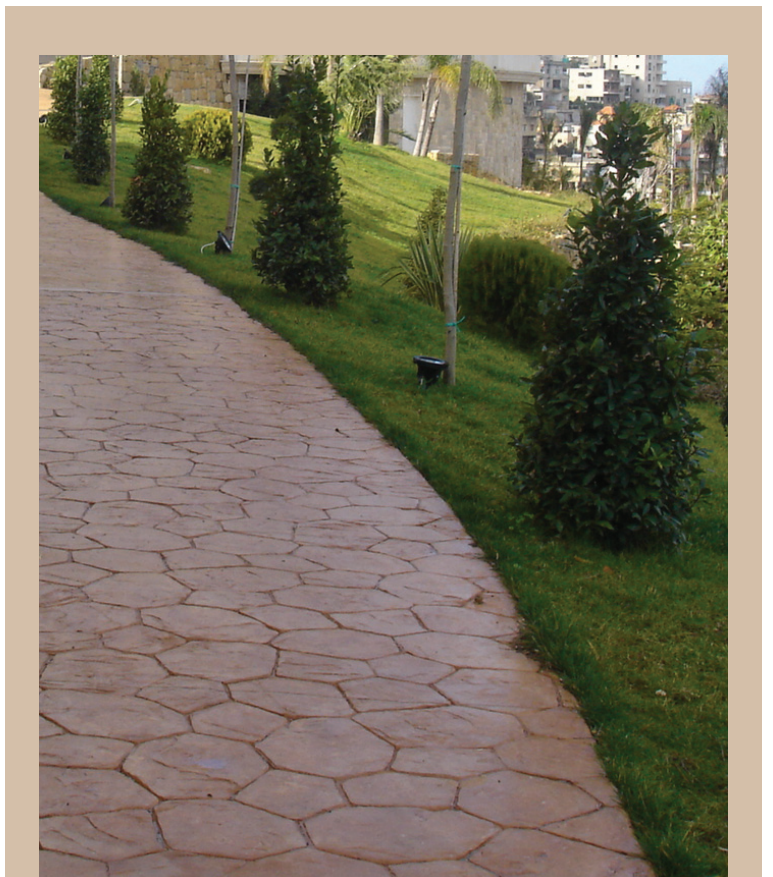




# RANDOM STONE

---

Regardless of a driveway, pool deck or patio; the heavily textured fieldstones and natural looking joints of Random Stone will give universal beauty to any project.

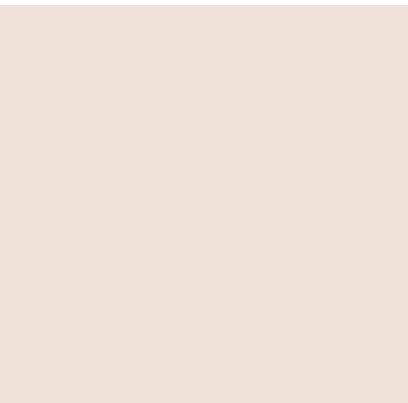




RANDOM STONE





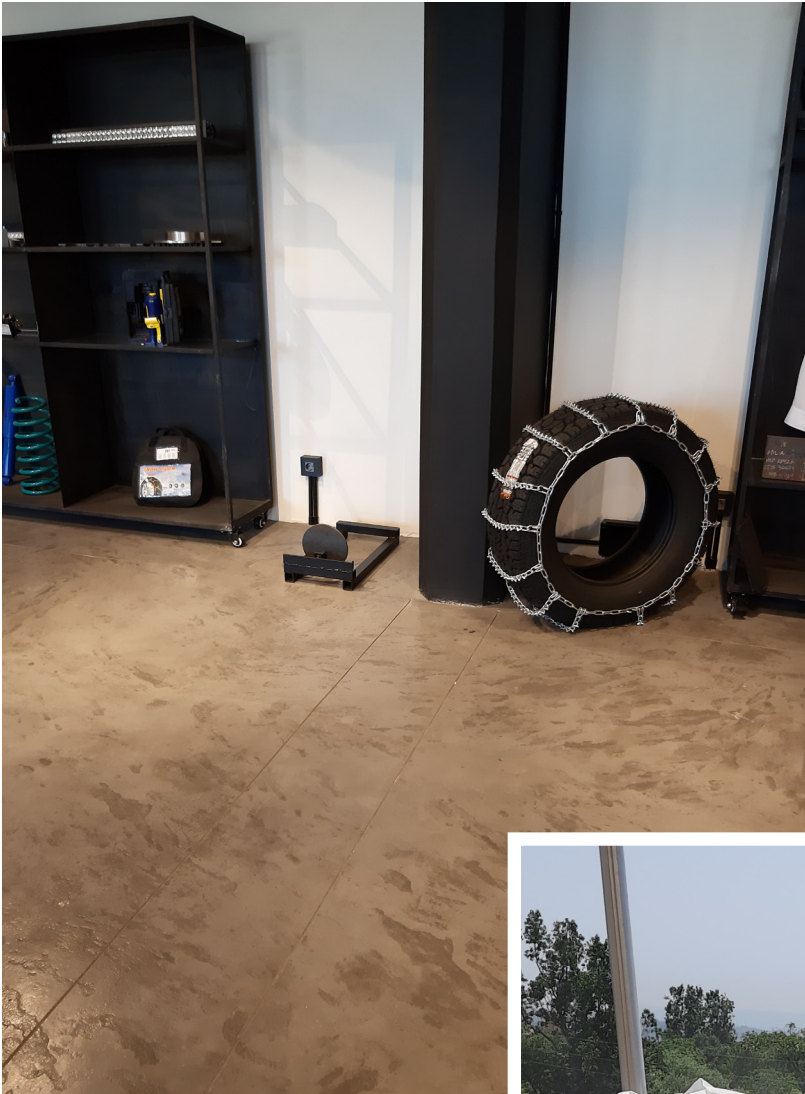


# SLATE

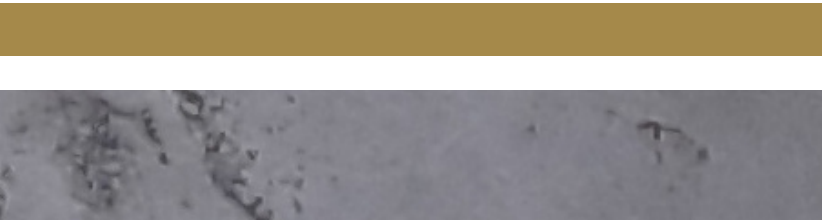
Natural texture is an attractive flooring option for indoors and out.







SLATE



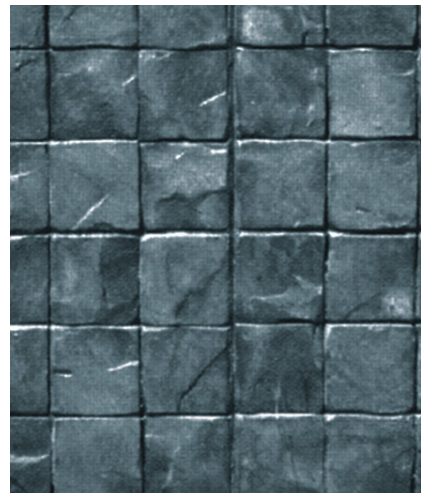
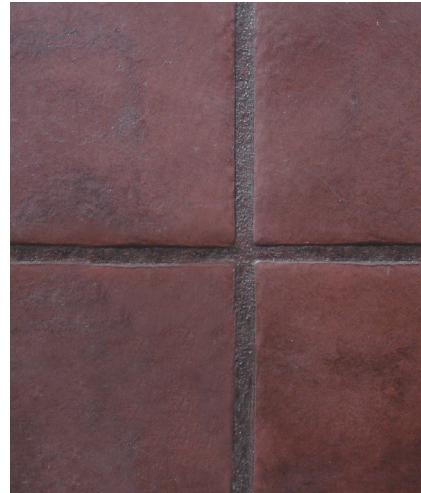
# STONE SKIN PATTERNS

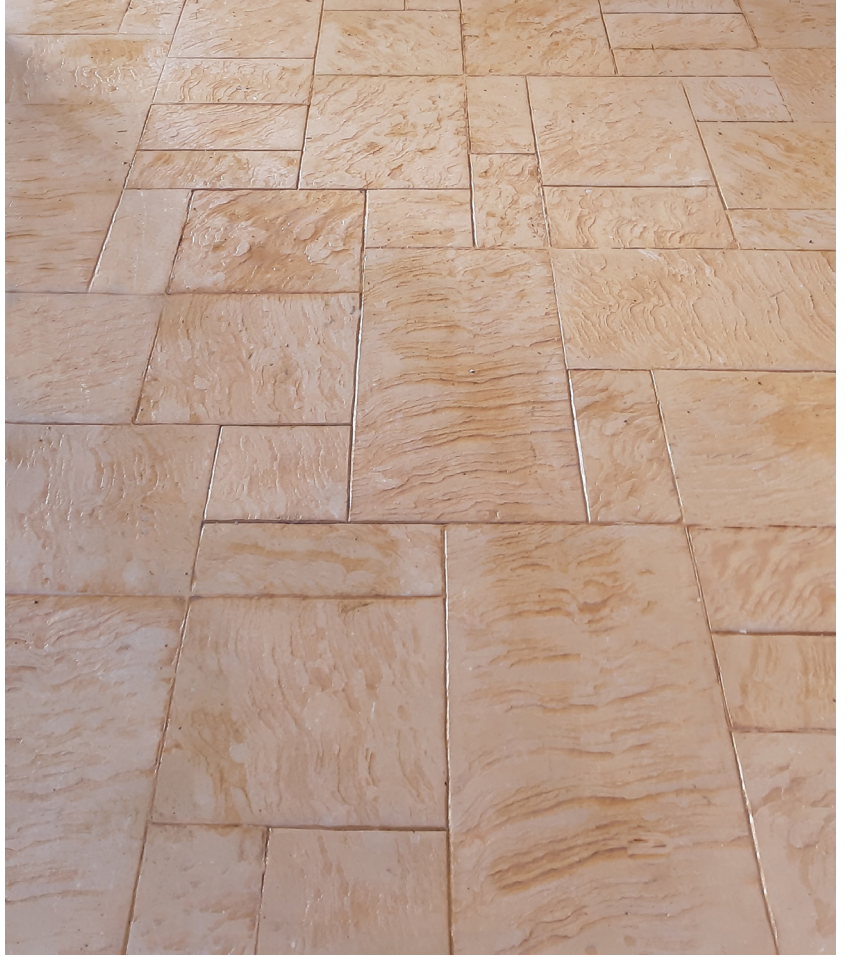
---

Texture ultra-thin, with pronounced veining, provide an old world appearance, and continuous natural stone textures on your surface without leaving a pattern as with concrete stamps.













# TRI-ASHLER

---

Ashlar Slate is a customer favorite. This pattern is timeless and a staple in the stamped concrete industry. The medium sized slate stones are adequate for most driveways and sidewalks











# EUROPEAN FAN

---

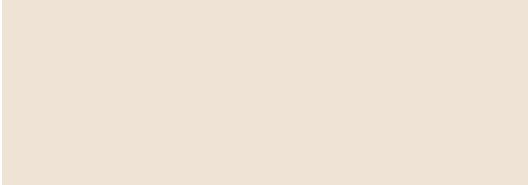
European Fan is made up of light-textured cobblestones laid out in a fish scale pattern.







EUROPEAN FAN

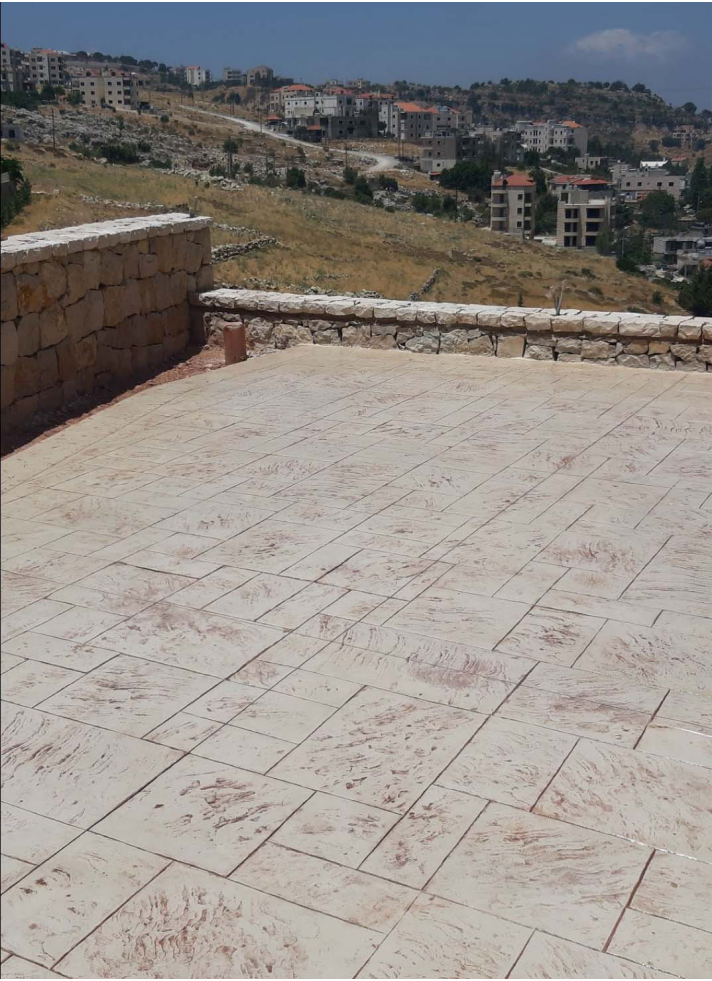




# ROYAL ASHLER

Royal Ashler Slate has a unique wavy texture with defined V-Joints that make this collection a one of a kind



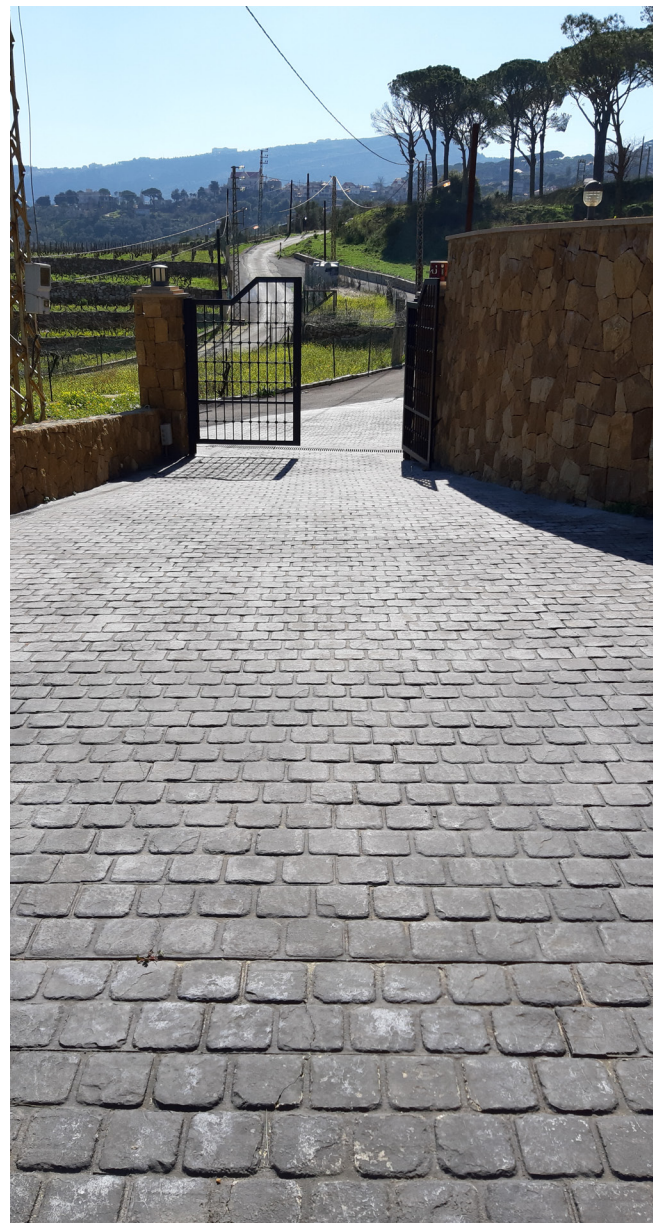






# EDINBURGH COBBLE

It is a rugged weathered cobblestone pattern.



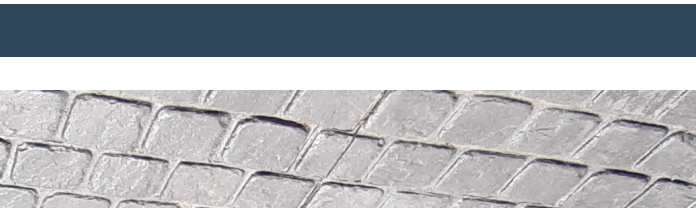
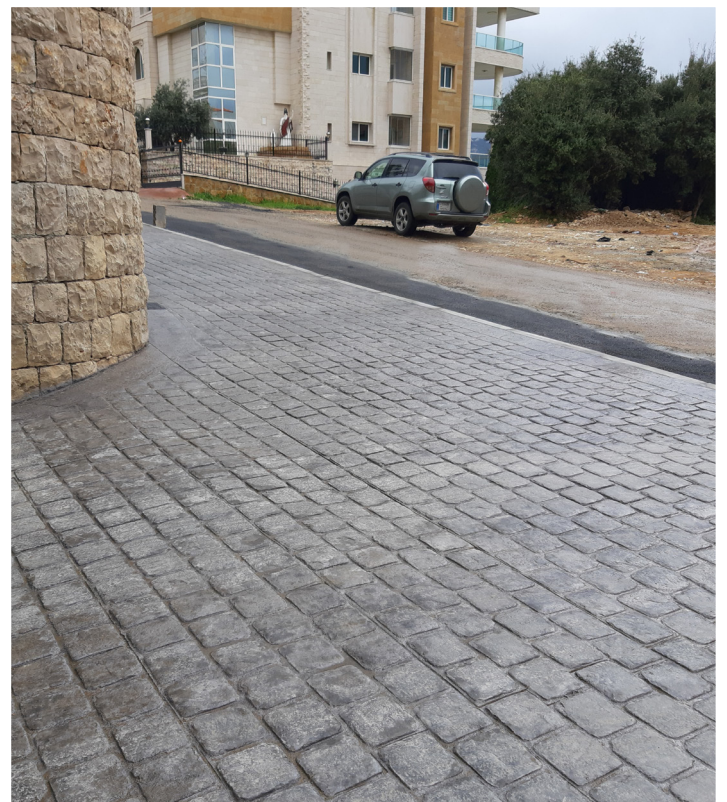
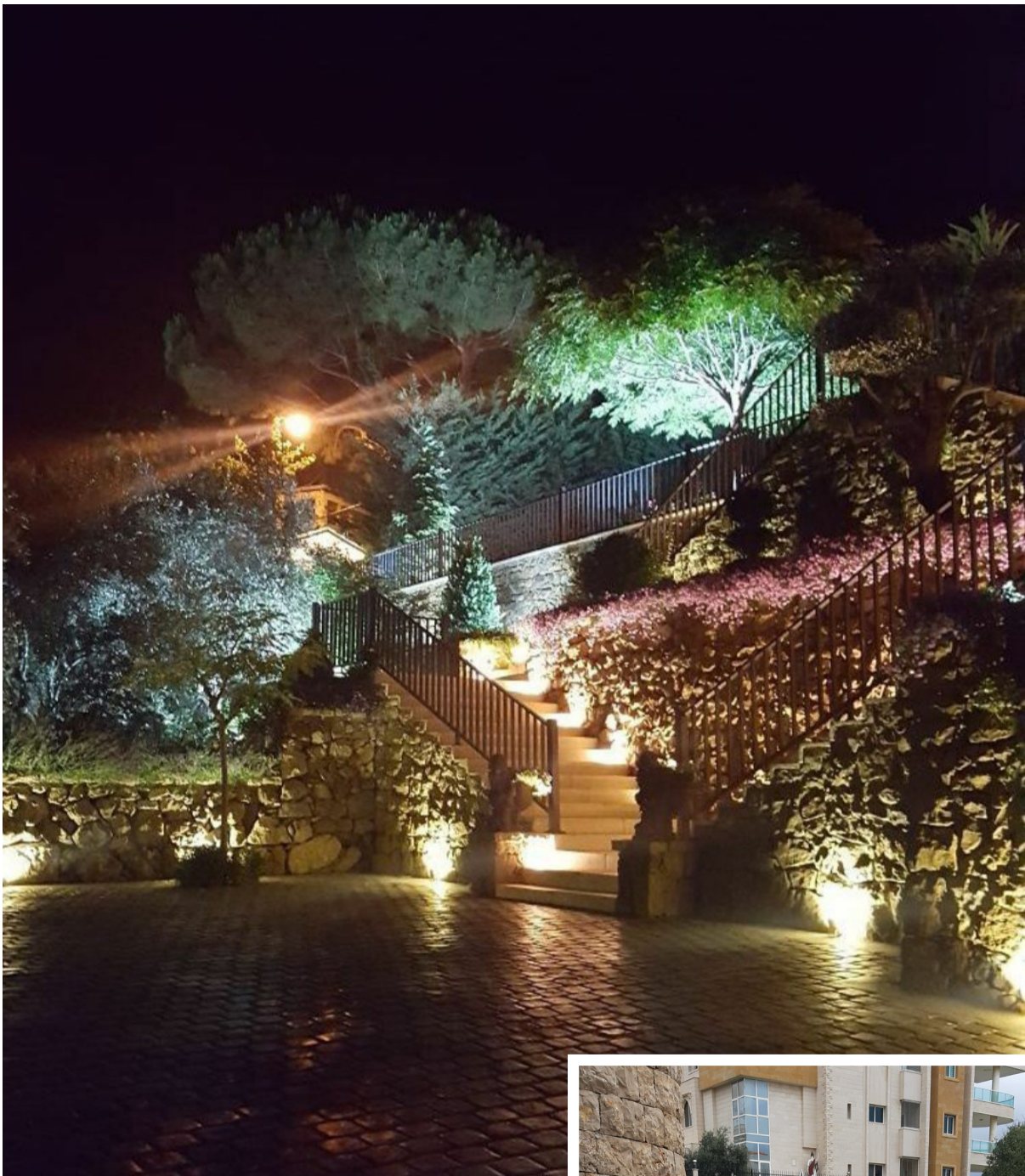


EDINBURGH COBBLE



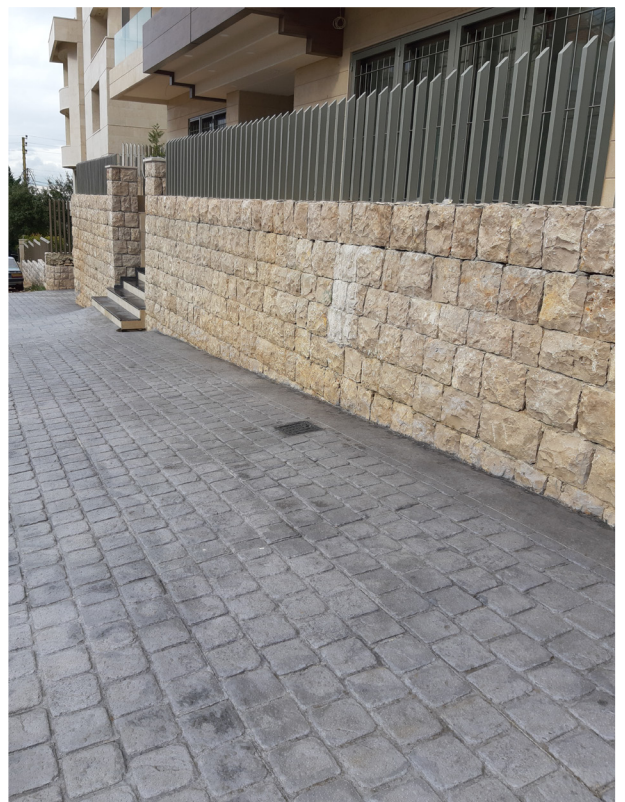




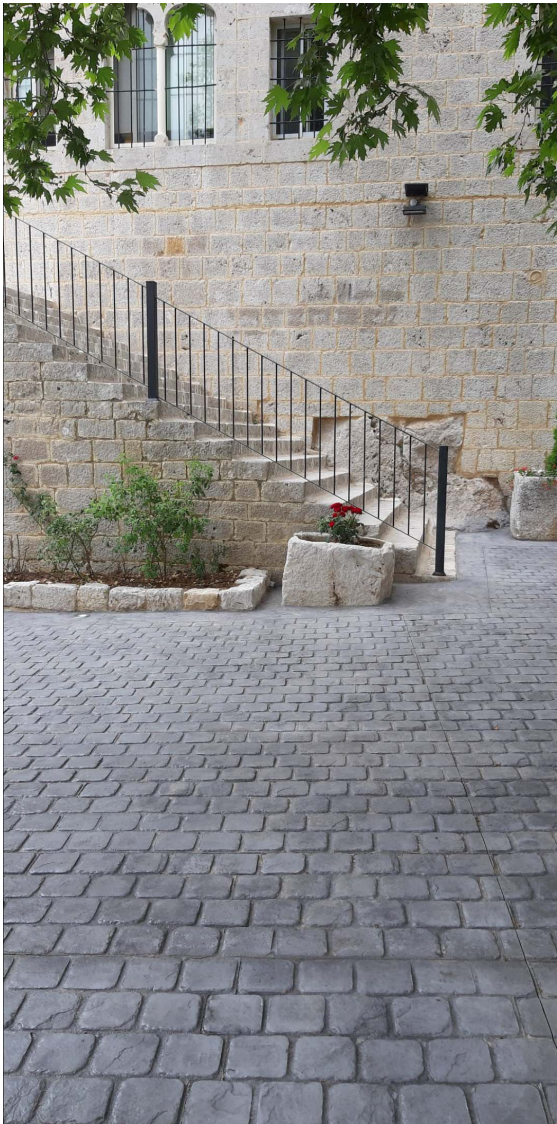




EDINBURGH COBBLE



EDINBURGH COBBLE



# ROCK SALTED PAVER

---



Rock salt Embossing Skin is a great way to get this popular look without the hassle of spreading rock salt. This irregular-shaped, seamless tool is used for imprinting texture over large or small sections of concrete, or concrete that may later be sawcut



# PAVER STONE

---

Old English Paver stone is a series of antiquated paver stones laid in a running bond pattern.





PAVER STONE

# CASTLE STONE

Assembled with hand-cut stones imported from the Alps, Castle Stone fuses both ashler and random stone patterns together.







CASTLE STONE







CASTLE STONE

# COBBLE CIRCLE

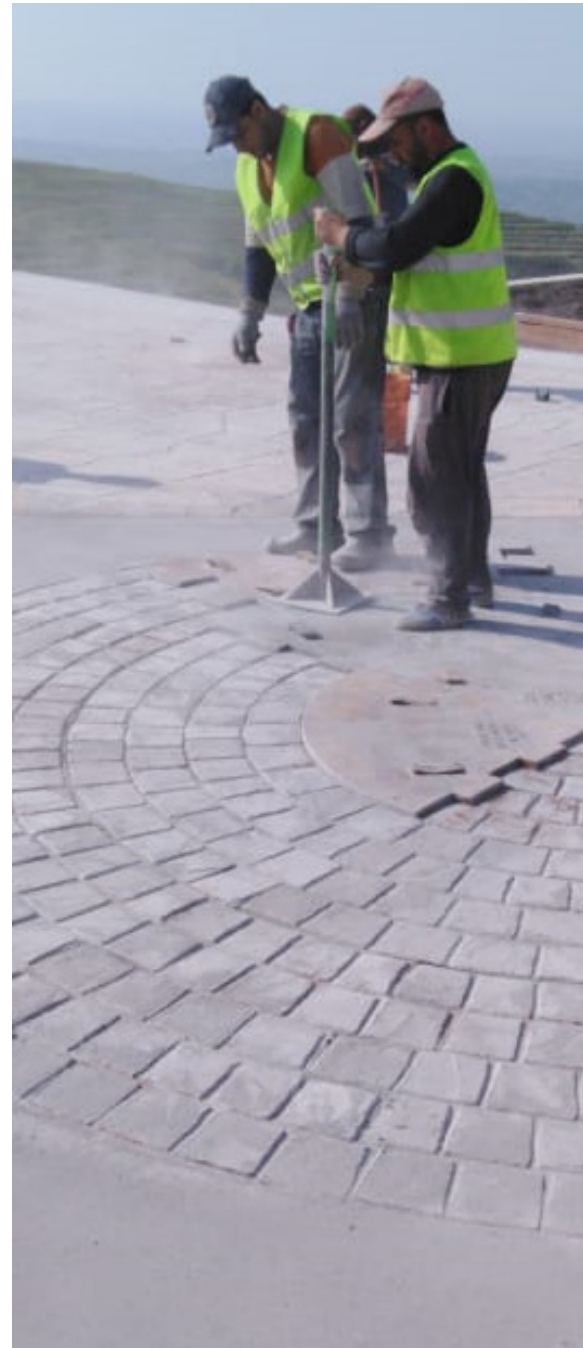
---

Cobble Circle Stamps provide additional character to any project. These select radial tools and cobble circle medallions allow for imprinting perfect circles, rings, or borders with dimensions ranging from 1.5 meters out to 7.3 meters in diameter.





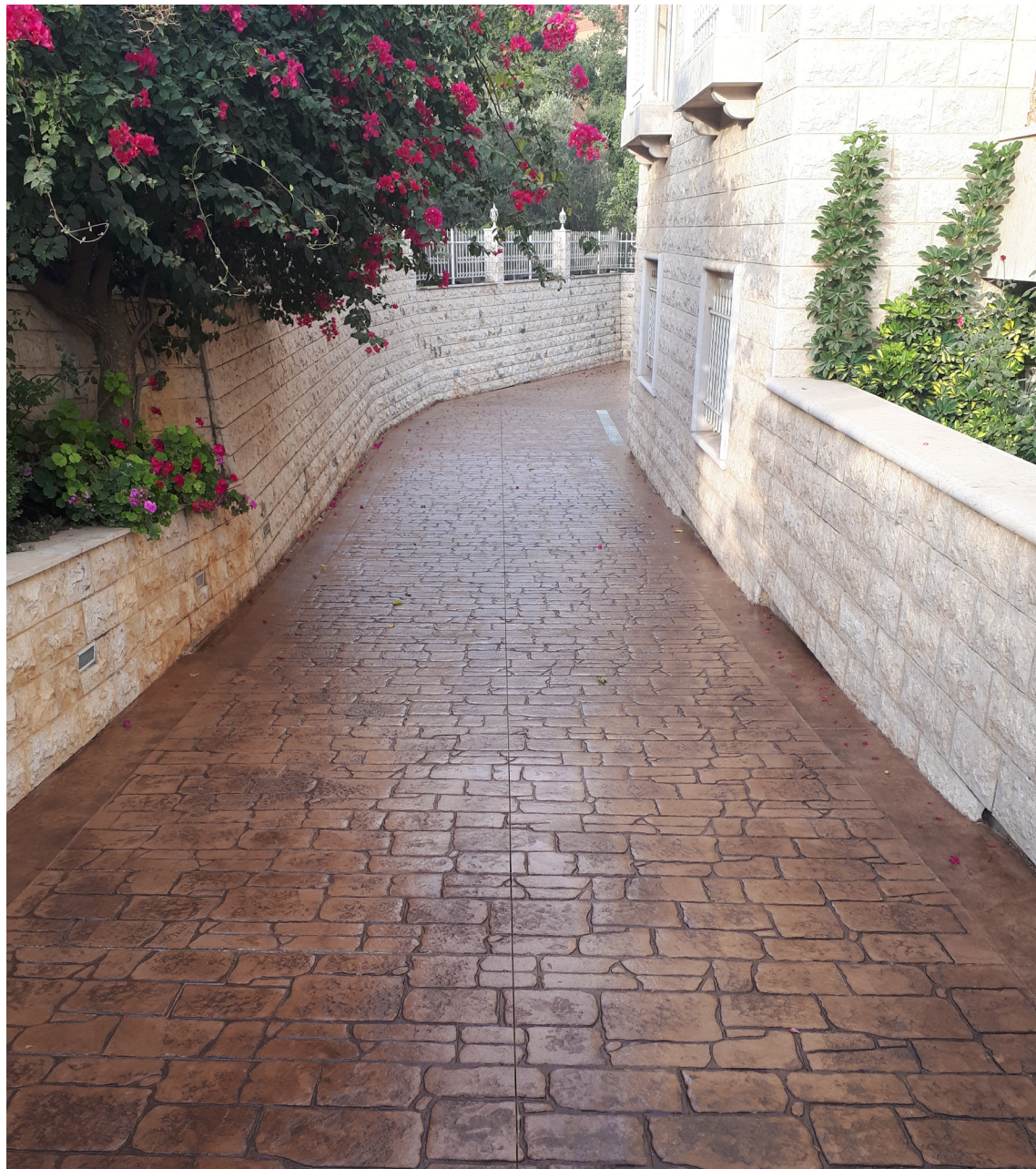
**COBBLE CIRCLE**

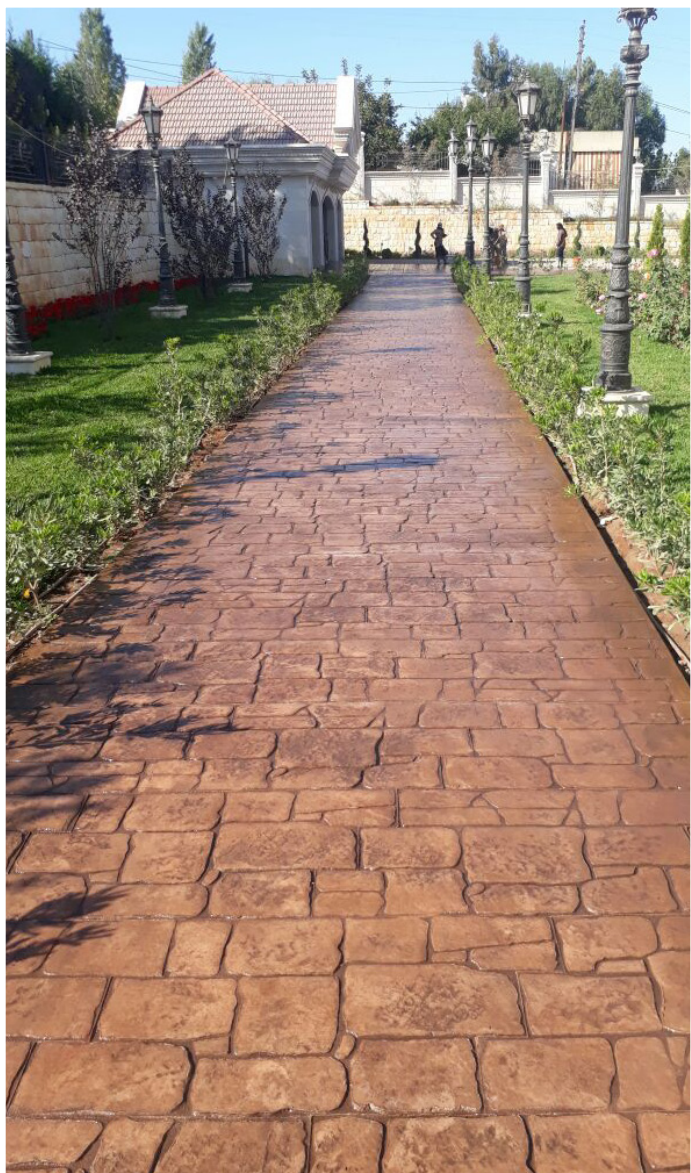


# OLD FLAT STONE

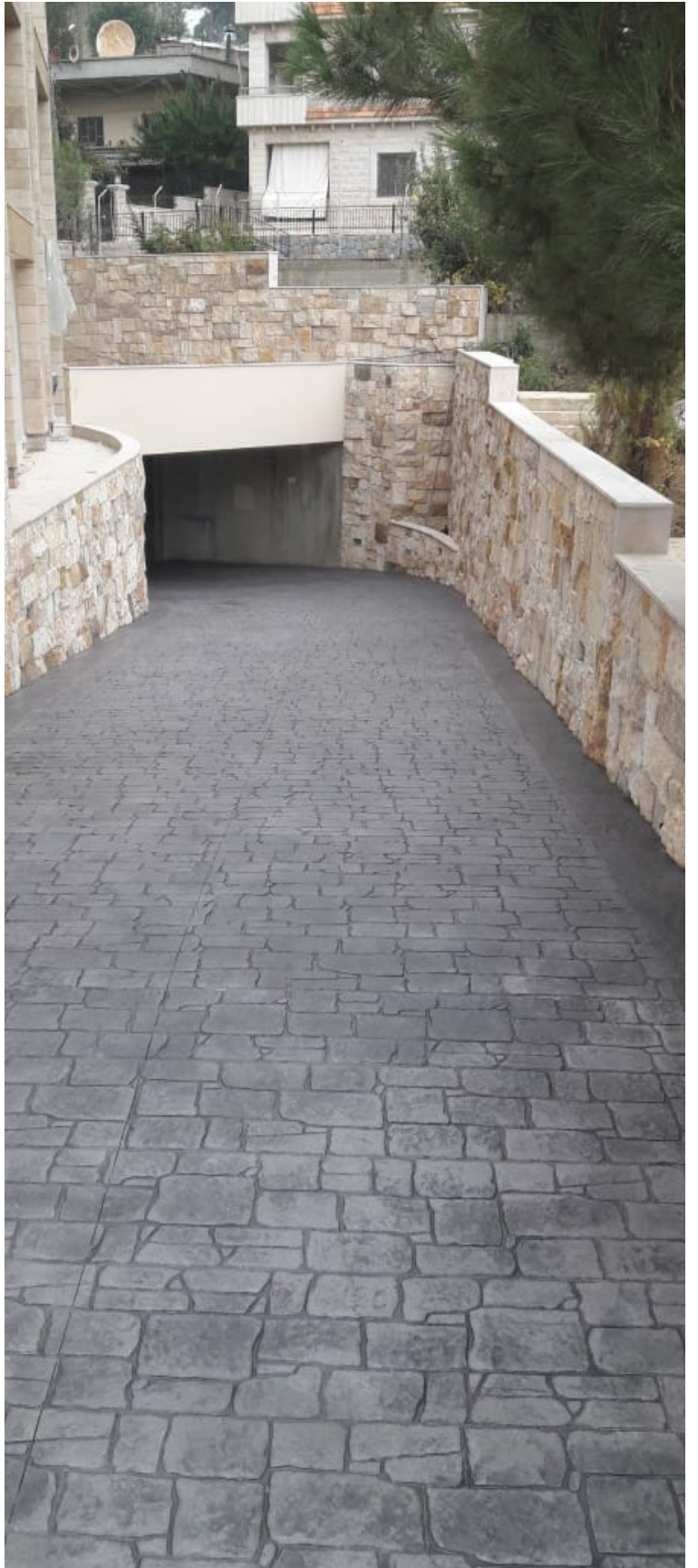
---

uses large, irregular shaped pieces of natural, worn granite to give concrete surfaces distinct character.





OLD FLAT STONE





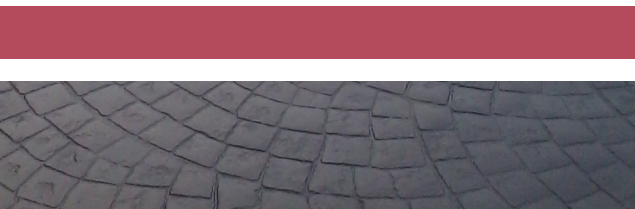




# DANISH FAN

---

Need Text





DANISH FAN



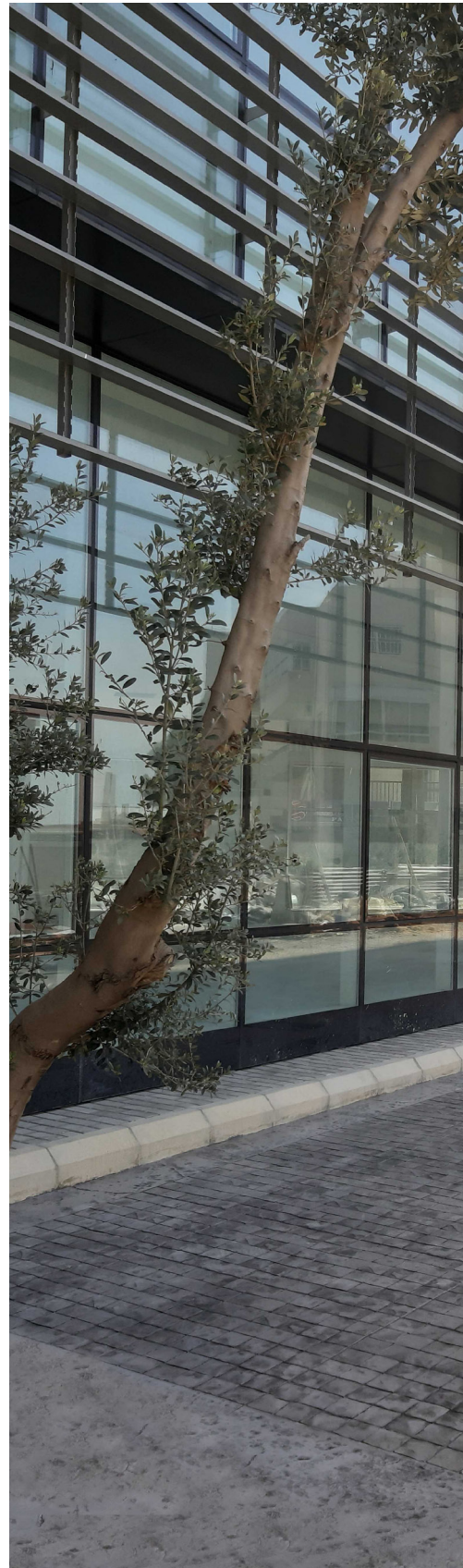
# GRANITE SET

---

Need Text









GRANITE SET





# PAVER STONE

Need Text

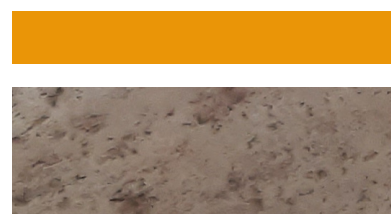




# PLAY GROUND

Need Text







# WOOD PLANKS

---

The wood plank pattern simulates wooden decking. This pattern is great for sidewalks between other patterns!

# SERPENTINE


---

Serpentine Slate Cobblestone is made up of a series of lightly-textured cobblestones laid in serpentine courses.



 [www.G-concrete.com](http://www.G-concrete.com)

 Jisr al bacha, Metn, Lebanon

 +961 3 872724 | +961 3 810889  
+961 3 864248 | +961 1 481454