

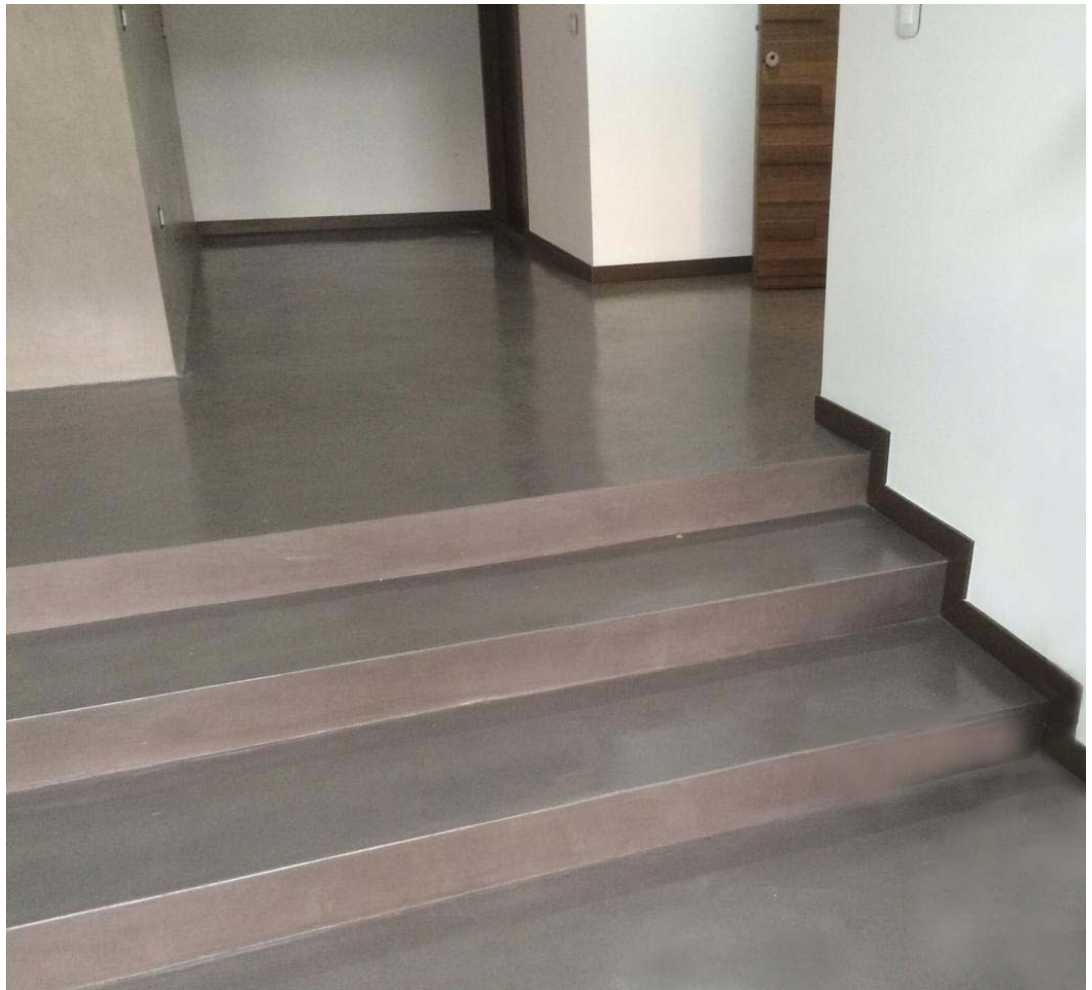
MICROTOPPING

# STAIRS









# STAIRS







It can be applied on the stairs but is better to apply a metal corner which can be internal, embedded in the base mortar or external as a decorative element.

[www.G-concrete.com](http://www.G-concrete.com)

Jisr al bacha, Metn, Lebanon

+961 3 872724 | +961 3 810889 | +961 3 864248 | +961 1 481454

